

Week 1(30/5-2/6)

- Summer training on basic techniques
- Project Plans discussion

Week 2-4(7/6-9/6,20/6-24/6,20/6-24/6,)

- Phusion PCR of BBa_B0032-*PhIF*, BBa_B0034- *PhIF* and BBa_B0030-*PhIF*

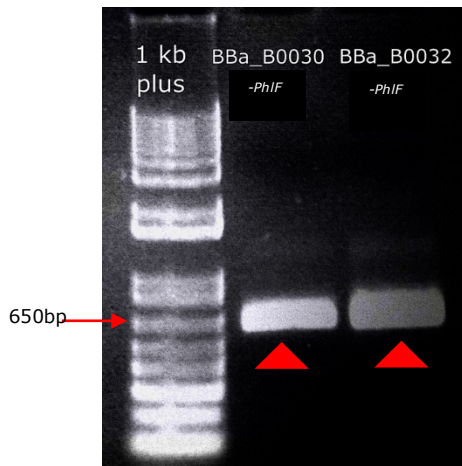
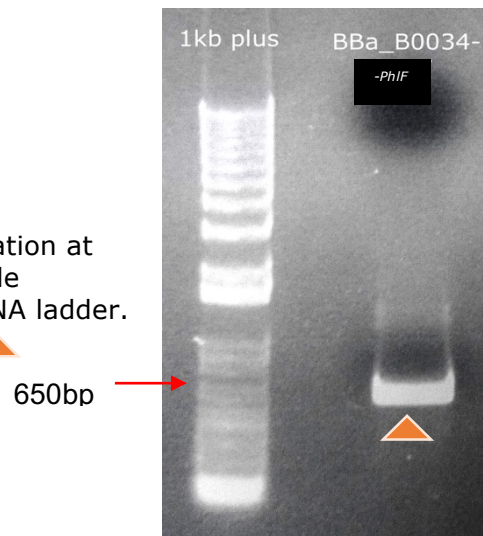


Fig a) Phusion PCR of BBa_ B0032-*phIF* and BBa_ B0030-*phIF*

Gel electrophoresis was carried at 1% agarose concentration at 130V, in-gel stained by Midori Green. The plasmid sample underwent Colony PCR was compared to 6µl 1kb plus DNA ladder. The expected band size for BBa_B0030-*PhIF* and BBa_B0032-*PhIF* are 656 and 654 bp respectively. It is indicated by ▲

Fig b) Phusion PCR of BBa_B0034- *PhIF*

Gel electrophoresis was carried at 1% agarose concentration at 130V, in-gel stained by Midori Green. The plasmid sample underwent Colony PCR was compared to 6µl 1kb plus DNA ladder. The expected band size is 653 bp. It is indicated by ▲



- Digestion of BBa_B0032- *PhIF*, BBa_B0034- *PhIF* and BBa_B0030- *PhIF*
- Phosphorylation and annealing of *PhIFp* FW and RV oligos
- Ligation of BBa_B0032- *PhIF*, BBa_B0034- *PhIF* and BBa_B0030- *PhIF* with pSB1C3 pSB1C3- *PhIFp* with BBa_E0240
- Colony PCR of pSB1C3-BBa_B0032- *PhIF*, pSB1C3-BBa_B0034- *PhIF*, pSB1C3-BBa_B0030- *PhIF* and pSB1C3- *PhIFp* -BBa_E0240

Week 5 (4/7-8/7)

- Digestion of pSB1C3-BBa_B1006 and pSB1C3- *PhIFp* -BBa_E0240, pSB1C3- *PhIFp* -BBa_E0240 and pSB3K3-BBa_E0240
- Ligation of pSB1C3-BBa_B1006 with pSB1C3- *PhIFp* -BBa_E0240, pSB1C3 with BBa_B0030- *PhIF* and BBa_B0032- *PhIF* and *PhIFp* -BBa_E0240 with pSB3K3
- Phusion PCR for BBa_B0030- *PhIF* and BBa_B0032- *PhIF*
- Colony PCR and restriction check of pSB1C3-BBa_B1006- *PhIFp* -E0240, pSB1C3- BBa_B0032- *PhIF*, pSB1C3- BBa_B0030- *PhIF* and pSB3K3- *PhIFp* -BBa_E0240

Week 6 (11/7-15/7)

- Digestion of pSB1C3-BBa_B1006- *PhIFp* -E0240, pSB1C3- *PhIFp* and pSB3K3- BBa_B0032-C0012, pSB1C3-J04450, BBa_B0032-C0040 and pSB1C3- *PhIFp* -BBa_E0240 and pSB3K3-BBa_E0240
- Ligation of pSB1C3-BBa_B1006- *PhIFp* -E0240 and pSB3K3, pSB1C3 with BBa_B0030- *PhIF* and BBa_B0032- *PhIF*, BBa_B0032-C0012 with *PhIFp*, BBa_B0032-C0040 with pSB3K3- *PhIFp* -BBa_E0240, and *PhIFp* -BBa_E0240 with pSB3K3
- Colony PCR of pSB3K3-BBa_B1006- *PhIFp* -E0240 & *PhIFp* -BBa_B0032-C0012, pSB3K3-BBa_B1006-PphIF-E0240
- Colony PCR and restriction check of pSB3K3- *PhIFp* -BBa_E0240

Week 7(18/7-22/7)

- Digestion of pSB3K3-BBa_J23101-B0032-C0012-B1006, pSB3K3- *PhIFp* -BBa_E0240, BBa_B0032-C0040-E0240, *PhIFp* - BBa_B0032-C0012 and pSB1C3-BBa_J23101-B0032-C0040-B1006
- Ligation of pSB3K3-BBa_J23101-B0032-C0012-B1006 with pSB3K3-PphIF-BBa_E0240, BBa_B0032-C0040-E0240 with *PhIFp* - BBa_B0032-C0012 and pSB3K3- *PhIFp* -BBa_E0240 with BBa_J23101-B0032-C0040-B1006

- Colony PCR of pSB1C3- BBa_B0032- *PhlF*, pSB1C3- BBa_B0030- *PhlF*, BBa_B0032-C0040-E0240, *PhlFp* - BBa_B0032-C0012
- Restriction check for BBa_J23101-B0032-C0012-B1006- *PhlFp* -E0240 and *PhlFp* - BBa_B0032-C0012-B0032-C0040-E0240, BBa_J23101-B0032-*phlF*-B1006- *PhlFp* -E0240, BBa_B0032- *PhlF*, BBa_B0030- *PhlF*, vB0032-C0040-E0240, *PhlFp* - BBa_B0032-C0012
- Colony PCR and restriction check of pSB3K3-BBa_J23101-B0032-C0040-B1006- *PhlFp* -BBa_E0240

Week 8 (25/7-29/7)

- Colony PCR and Restriction Check for pSB3K3-BBa_J23101-B0032-C0012-B1006- *PhlFp* -E0240
- Restriction Check of BBa_J23101-B0032-C0012-B1006- *PhlFp* - E0240
- Ligation of BBa_B0032-C0040-E0240 with *PhlFp* - BBa_B0032-C0012, pSB3K3- *PhlFp* -BBa_E0240 with BBa_J23101-B0032-C0040-B1006
- Phusion PCR for BBa_B0030- *PhlF* and BBa_B0032- *PhlF*
- Colony PCR and restriction check for *PhlFp* - BBa_B0032-C0012-B0032-C0040-E0240 and pSB3K3-BBa_J23101-B0032-C0040-B1006-P*phlF*-BBa_E0240
- Digestion of pSB3K3- *PhlFp* -BBa_E0240 and pSB1C3-BBa_J23101-B0032-C0040-B1006

Week 9(1/8-5/8)

- Characterisation of pSB3K3- *PhlFp* -BBa_E0240, pSB3K3-BBa_J23101-B0032-C0040-B1006- *PhlFp* -BBa_E0240 and *PhlFp* - BBa_B0032-C0012-B0032-C0040-E0240 with strain DH10B
- Digestion of pSB3K3- *PhlFp* -BBa_E0240 and pSB1C3-BBa_J23101-B0032-C0040-B1006
- Ligation of pSB3K3- *PhlFp* -BBa_E0240 with BBa_J23101-B0032-C0040-B1006

- Colony PCR and restriction check of pSB3K3-BBa_J23101-B0032-C0040-B1006- *PhIFp* -BBa_E0240

Week 10(8/8-12/8)

- Characterisation of pSB3K3- *PhIFp* -BBa_E0240, pSB3K3-BBa_J23101-B0032-C0040-B1006- *PhIFp* -BBa_E0240 and *PhIFp* - BBa_B0032-C0012-B0032-C0040-E0240 with strain DH10B
- Phusion of *PhIF*
- Colony PCR and restriction check of pSB3K3-BBa_J23101-B0032-C0040-B1006- *PhIFp* -BBa_E0240

Week 11(15/8-19/8)

- Characterisation of pSB3K3- *PhIFp* -BBa_E0240 and *PhIFp* - BBa_B0032-C0012-B0032-C0040-E0240 with strain DH10B
- Digestion of pSB1C3- BBa_B0032 and *PhIF*
- Ligation of pSB1C3 with BBa_B0032- *PhIF*
- Colony PCR of pSB1C3- BBa_B0032- *PhIF*
- Colony PCR and restriction check of pSB3K3-BBa_J23101-B0032-C0040-B1006- *PhIFp* -BBa_E0240

Week 12(22/8-26/8)

- Restriction check for pSB1C3- BBa_B0032- *PhIF*
- Digestion of pSB1C3- BBa_B0032-*phIF* and BBa_J61002-J23101

Week 13-14 (29/8-2/9, 5/9-9/9)

- Characterisation of pSB3K3- *PhIFp* -BBa_E0240, pSB3K3-BBa_J23101-B0032-C0040-B1006- *PhIFp* -BBa_E0240, pSB3K3-BBa_J23101-B0032-C0012-B1006- *PhIFp* -BBa_E0240 and *PhIFp* - BBa_B0032-C0012-B0032-C0040-E0240 with strain JW0336
- Digestion of pSB1C3- BBa_B0032- *PhIF* and BBa_B1006
- Ligation of pSB1C3- BBa_B0032- *PhIF* with BBa_B1006
- Colony PCR of pSB1C3- BBa_B0032-*phIF*-B1006

- Restriction Check of pSB1C3- BBa_B0032-phIF-B1006

Week 15 (12/9-14/9)

- Digestion of pSB1C3-K823005 and pSB1C3- BBa_B0032- *PhIF* -B1006
- Ligation of pSB1C3- BBa_B0032- *PhIF* -B1006 with pSB1C3-K823005
- Colony PCR of pSB1C3-BBa_j23101-B0032- *PhIF* -B1006

Week 16 (19/9-23/9)

- Digestion of pSB1C3-K823005 and pSB1C3- BBa_B0032- *PhIF* -B1006
- Ligation of pSB1C3- BBa_B0032- *PhIF* -B1006 with pSB1C3-K823005
- Colony PCR of pSB1C3-BBa_j23101-B0032- *PhIF* -B1006
- Restriction Check of pSB1C3-BBa_j23101-B0032- *PhIF* -B1006
- Digestion of pSB1C3-BBa_j23101-B0032- *PhIF* -B1006 and pSB3K3-
PphIF-BBa_E0240

Week 17(26/9-30/9)

- Ligation of BBa_j23101-B0032- *PhIF* -B1006 with pSB3K3-*PphIF*-
BBa_E0240
- Colony PCR for pSB3K3- BBa_j23101-B0032- *PhIF* -B1006- *PphIF*-
E0240
- Restriction Check of pSB3K3- BBa_j23101-B0032- *PhIF* -B1006- *PphIF*-
E0240

Week 18(3/10-7/10)

- Digestion of pSB1C3- *PphIF*-BBa_E0240, pSB1A2-B0030- *PhIF* &
pSB1A2-B0034- *PhIF*
- Ligation of pSB1C3 with B0030- *PhIF* and B0034- *PhIF*
- Colony PCR of pSB1C3-B0030- *PhIF* and pSB1C3-B0034- *PhIF*

Week 19 (10/10-14/10)

- Restriction Check of pSB1C3-B0030- *PhIF* and pSB1C3-B0034- *PhIF*
Characterisation of all constructs